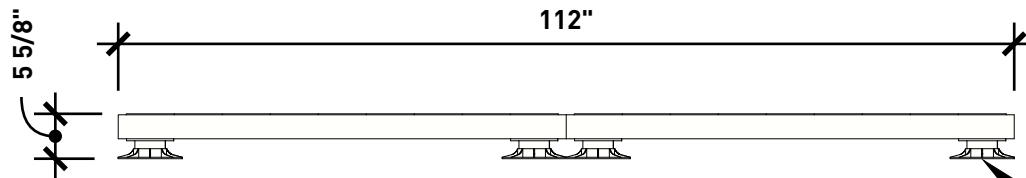


FRONT




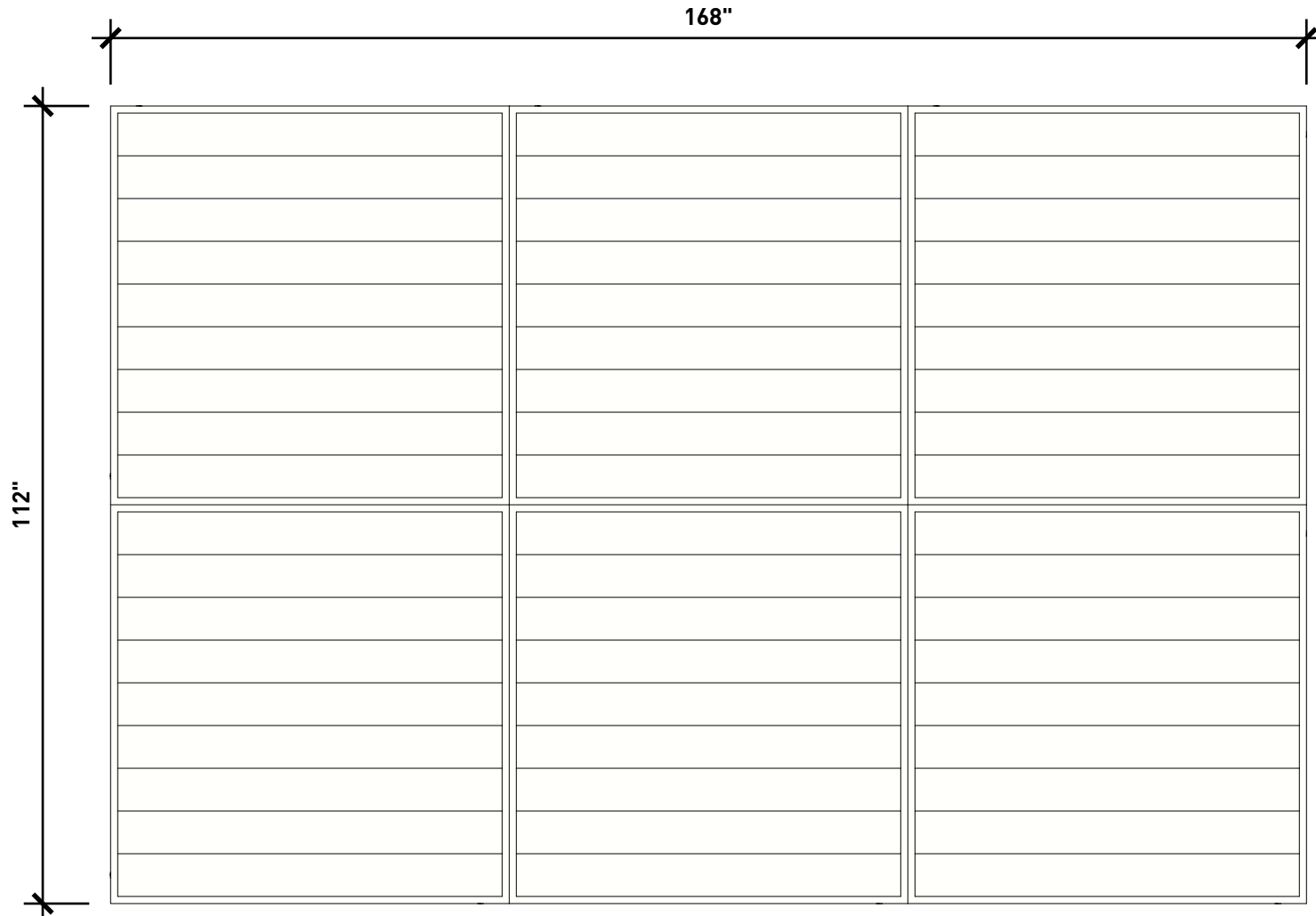
SIDE

ScrewJack Deck Support Pedestals

NOTE


Multiple kits bolted together

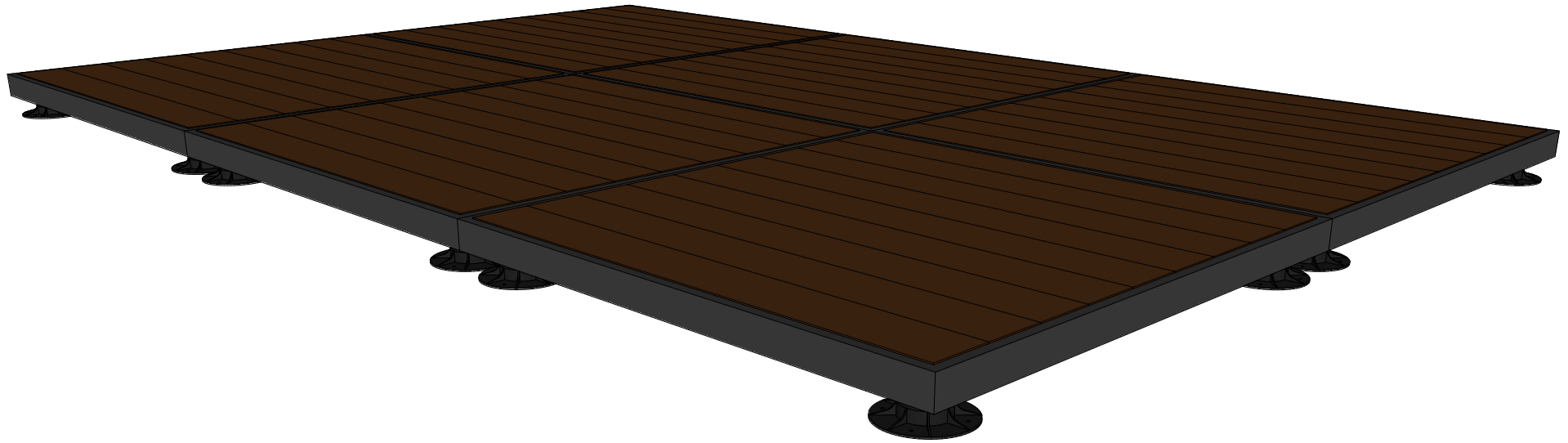
	WISHBONE SITE FURNISHINGS LTD 210-27090 GLOUCESTER WAY LANGLEY, BC			
	DWG. TITLE: PERMA-WALK MODULAR DECK SYSTEM REVISION: 01/04/19 R:01			
MATERIAL: ALUMINUM	DWG. NO. DWSBDECK26031900	DRAWN BY: JAMES NEDEN		
PATTERN NO. N/A	MODEL NO. PW5656 - 6	SCALE: 1:24	SHEET: 1 OF 3	DATE: 01 APR 19



NOTE


Multiple kits bolted together

	<p align="center">WISHBONE SITE FURNISHINGS LTD 210-27090 GLOUCESTER WAY LANGLEY, BC</p>			
	<p>DWG. TITLE: PERMA-WALK MODULAR DECK SYSTEM REVISION: 01/04/19 R:01</p>			
<p>MATERIAL: ALUMINUM</p>	<p>DWG. NO. DWSBDECK26031900</p>	<p>DRAWN BY: JAMES NEDEN</p>		
<p>PATTERN NO. N/A</p>	<p>MODEL NO. PW5656 - 6</p>	<p>SCALE: 1:24</p>	<p>SHEET: 2 OF 3</p>	<p>DATE: 01 APR 19</p>



NOTE

Multiple kits bolted together

	<p align="center">WISHBONE SITE FURNISHINGS LTD 210-27090 GLOUCESTER WAY LANGLEY, BC</p>			
	<p>DWG. TITLE: PERMA-WALK MODULAR DECK SYSTEM REVISION: 01/04/19 R:01</p>			
<p>MATERIAL: ALUMINUM</p>	<p>DWG. NO. DWSBDECK26031900</p>	<p>DRAWN BY: JAMES NEDEN</p>		
<p>PATTERN NO. N/A</p>	<p>MODEL NO. PW5656 - 6</p>	<p>SCALE: AS SHOWN</p>	<p>SHEET: 3 OF 3</p>	<p>DATE: 01 APR 19</p>