

# Beselt Round Waste Receptacle

Model Number

BTRR-24



This traditional top-load waste receptacle was designed to go alongside the Beselt Park Bench at the request of a customer. The cast aluminum construction, vertical slats, foot design, and overall aesthetic compliment the Beselt Bench nicely. The round lid is intentionally designed with a small opening to restrict the type and size of garbage that can go in it. The lid is secured to the base to prevent it being stolen or taking off in high winds and to allow for easy replacement due to damage or vandalism. On the durability side, aluminum is not as corrosive as steel and will last longer and look better with years of use.

## Material Specifications

Marine Grade Aluminum Frame  
Stainless Steel Hardware  
Super Durable Powder Coating

## Customized Solutions

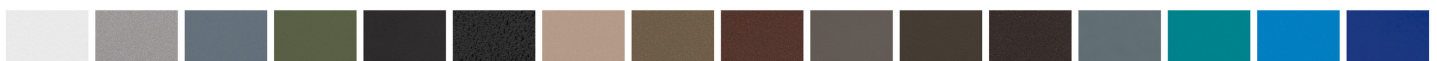
Custom Powder Coating  
(Setup Charges May Apply)  
Lockable Lid  
Bottle and Can Recycler  
Side Ashtray  
INST-1.5 Stainless Steel Bolt-Down Kit

## Recycled Content

Recycled Content by Weight: 70%  
100% Recyclable

## Product Dimensions

Total Height: 33.5 inches / 85 cm  
Total Depth: 29 inches / 74 cm  
Length: 29 inches / 74 cm  
Capacity: 20.5 US gal / 78 l  
Weight: 90 lbs / 41 kg



OVER 30 POWDER COATING COLOURS \*Premium powder colours incur a surcharge per item

